

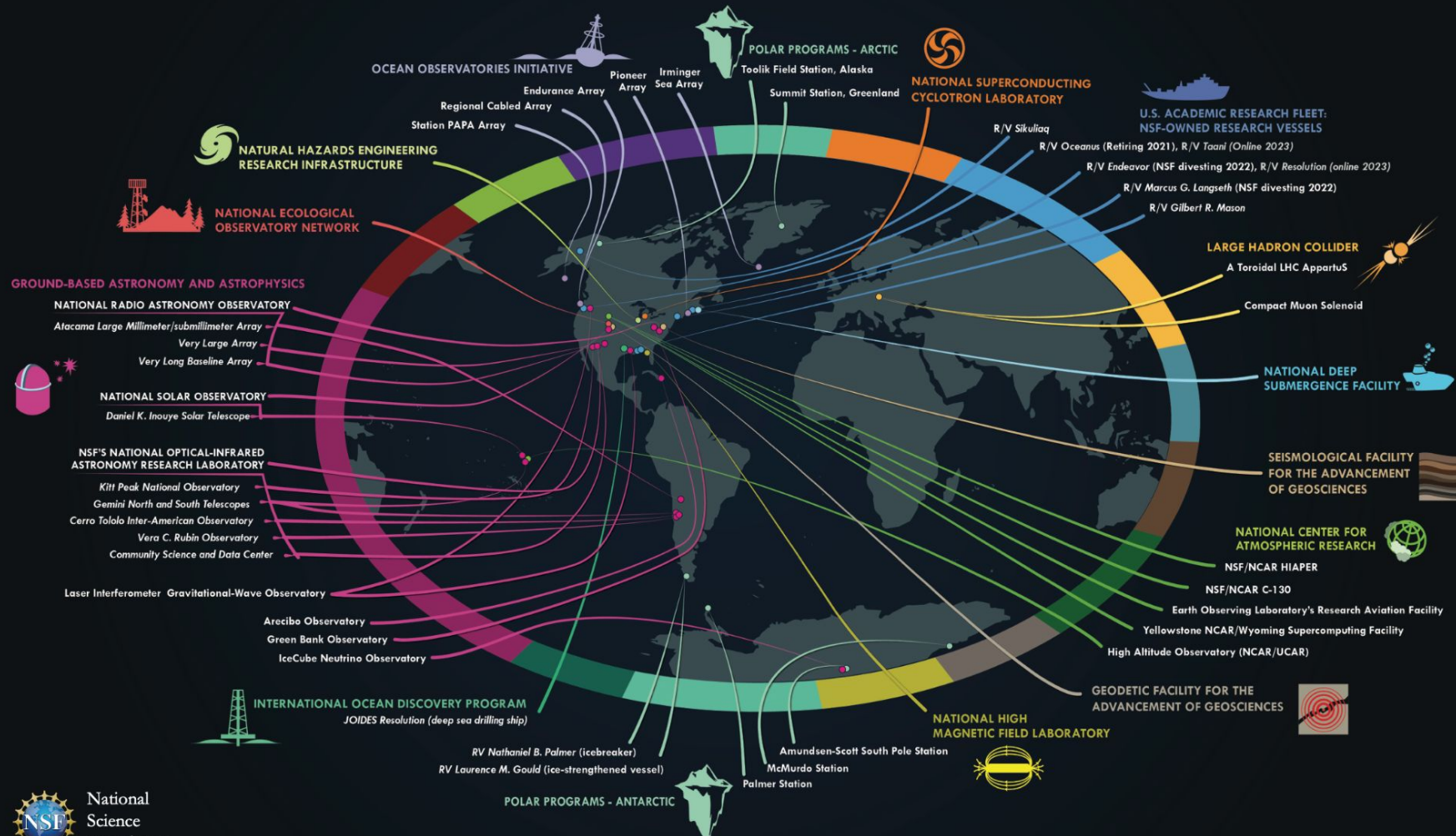


**Panel: “If I knew then what I know now, I would have never designed it this way”: Approaches to CI conceptualization and design**

*Co-leads: Anirban Mandal and Robert Casey*

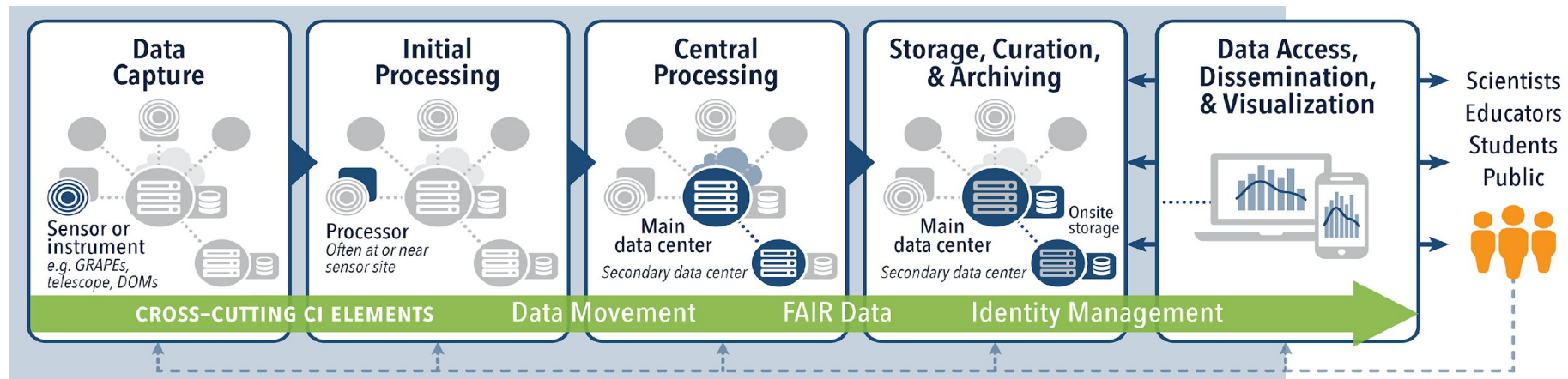
*Panel at the 2024 NSF Cyberinfrastructure for Major Facilities Workshop*

# MAJOR MULTIUSER FACILITIES ENABLING BASIC RESEARCH

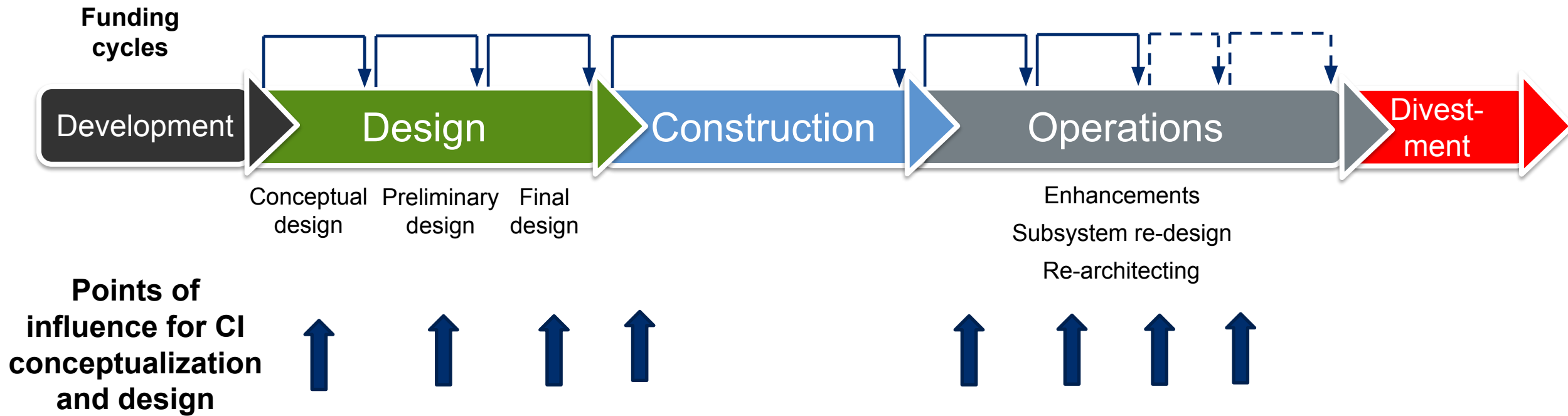


## NSF Major Facilities

Major Facilities rely on complex **cyberinfrastructure (CI)** to transform raw data into more interoperable and integration-ready data products



# Major Facilities Lifecycle



# Guiding Questions for the Panelists

1. What were some unexpected outcomes of CI design (during planning/design, construction, enhancements), which were discovered during deployment - and what are the top lessons learnt from that experience that might translate to the broader community ?
2. What are some of the best practices for involving the community of MF users to glean the CI requirements during design, construction or enhancements ?
3. What were the major steps in the CI conceptualization and design process ?



**Robert Casey**, Software Section Manager,  
EarthScope Data Services, representing  
**Earthscope / SAGE-GAGE**



**Dan Stanzione**, Associate Vice President  
for Research (UT Austin) and Executive  
Director, TACC, representing **LCCF**



**Sabine Botha**, Asst Research Professor,  
Biodesign Beus CXFEL Lab and  
Department of Physics, representing  
**CXFEL**



**Frank Wuerthwein**, Director of SDSC,  
OSG Executive Director, representing **LHC**



# Panelists' slides